

CATALINA AT THE POLO CLUB PLAT TWO

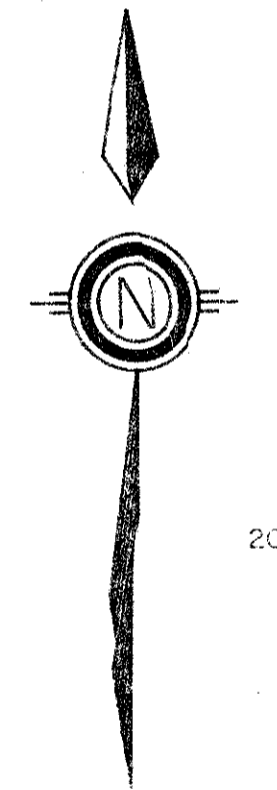
PART OF THE POLO CLUB P.U.D.

BEING A REPLAT OF A PORTION OF TRACT II OF "THE POLO CLUB PLAT I" SITUATE IN SECTION 35, TOWNSHIP 46 SOUTH, RANGE 42 EAST PALM BEACH COUNTY, FLORIDA

1987 SHEET 2 OF 2

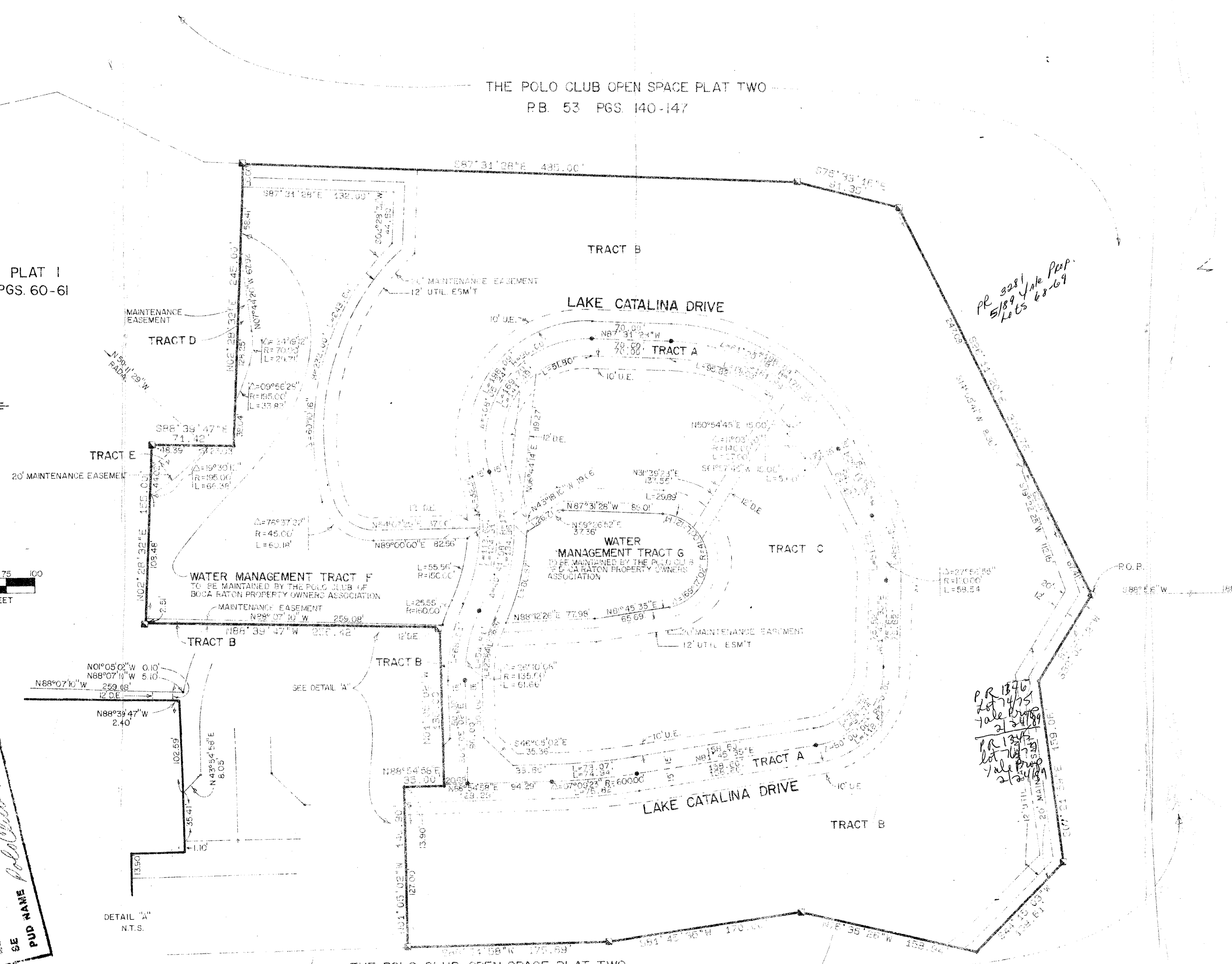
STATE OF FLORIDA
COUNTY OF PALM BEACH
THIS PLAT WAS FILED FOR
RECORD AT _____
THIS _____ DAY OF _____
AD, 1986 AND DULY RECORDED
IN PLAT BOOK _____ ON PAGES
_____ AND _____
JOHN B. DUNKLE, CLERK
BY: _____, D.C.

CATALINA PLAT I
PB.56 PGS. 60-61



0 10 20 30 40 50 75 100
SCALE IN FEET

Catalina II
35/46/42
REVISION: SEE PFD PLANS 1-2-87 JLB
REVISION: SEE LAND DEVELOPMENT SURVEY COMMENTS 1-21-87 JLB
REVISION: Per Land Development & Survey Comments 1-2-87 JLB
REVISION: Add 38.1' Maint. Eas. To 11.5-86
SUBDIVISION: Catalina II
TRACTS 115-2028
ZONING: 3243A
BLOCK: 308E
QUAD: 337
PUD NAME: *Pollo Club PUD*
SE



*PR 3081
5/18/89
Lake Prop.
Lois 6-8-89*

*PR 1376
2/17/85
Lake Prop.
Lois 2/24/85*

P.U.C.
NE CORNER OF "THE POLO CLUB OPEN SPACE
PLAT TWO PB. 53 PGS. 140-147

SE CORNER "THE POLO CLUB PLAT I"
PB. 52 PGS. 35-36

Pr. 84-21

04/36-300

57/115

Meridian		WEST PALM BEACH, FLORIDA	
Surveying and mapping inc.			
DRAWN	JLF	DATE	07/20/86
CHECKED	MHC	SCALE	1"=50'
DRAWING NO.	86-P2-044	CATALINA AT THE POLO CLUB PLAT TWO PARCEL D THE POLO CLUB P.U.D.	

REVISION: SEE PFD PLANS 1-2-87 JLB
REVISION: SEE LAND DEVELOPMENT SURVEY COMMENTS 1-21-87 JLB
REVISION: Per Land Development & Survey Comments 1-2-87 JLB
REVISION: Add 38.1' Maint. Eas. To 11.5-86